

ALL PILOTS OPERATING OUT OF SAUERDALE [FVSD] ARE HEREBY NOTIFIED THAT THIS AIRFIELD IS LOCATED 15 Nm SOUTH OF JOSHUA NKOMO INTERNATIONAL AIRPORT [FVJN] AND IS WITHIN THE CONTROL ZONE (CLASS C AIRSPACE) WHICH IS SUBJECT TO AIR TRAFFIC CONTROL FROM NKOMO APPROACH – 118.7 MHz.

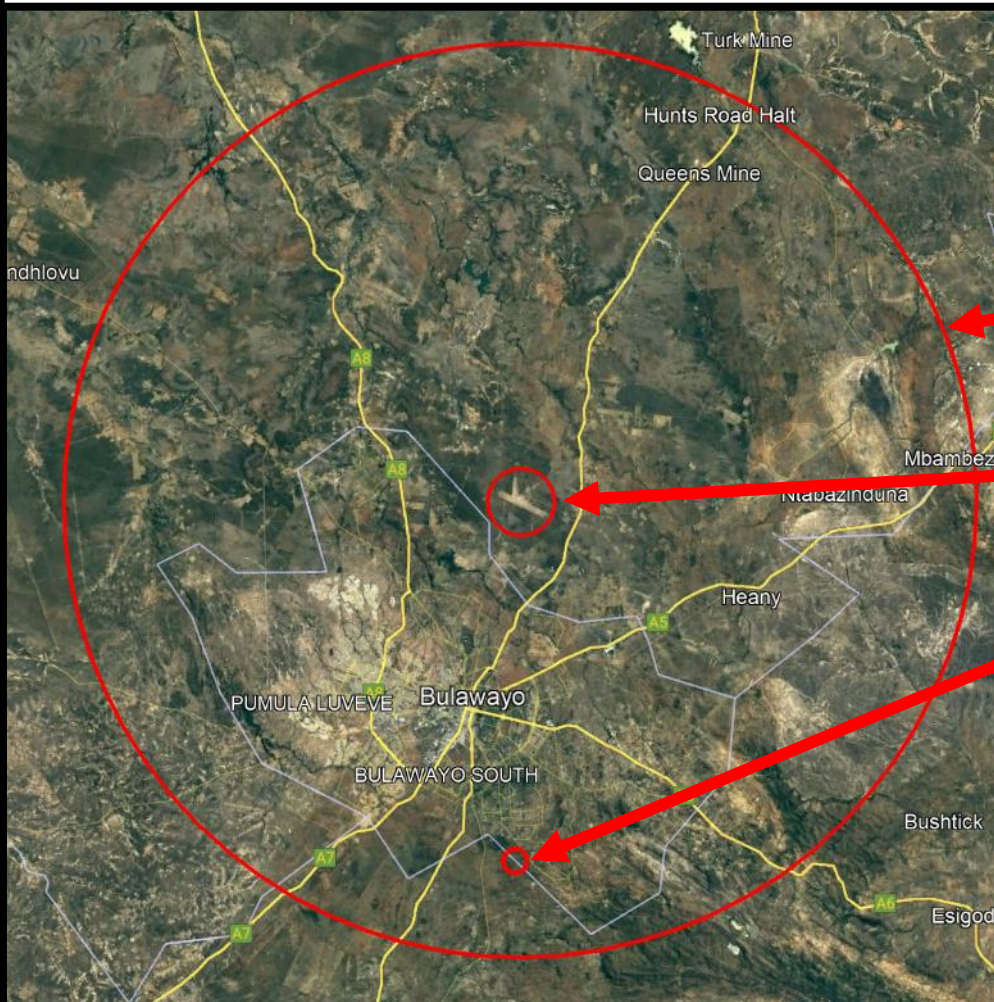
BEFORE DEPARTING FROM SAUERDALE AIRFIELD, ALL PILOTS ARE REQUIRED TO CALL AND OBTAIN APPROVAL FROM NKOMO APPROACH – 118.7 MHz.

WITHOUT PRIOR APPROVAL FROM NKOMO APPROACH, PILOTS ARE NOT PERMITTED TO DEPART FROM SAUERDALE AIRFIELD.

FVJN CONTROL ZONE BOUNDARY – 18 Nm

JOSHUA NKOMO INTERNATIONAL AIRPORT [FVJN]

SAUERDALE AIRFIELD [FVSD]



Bulawayo Light Sport Aircraft Club



Sauerdale Airfield

Douglasdale Rd, Bulawayo

20° 15' 3.09" S 28° 36' 36.86" E



Civil Aviation
Authority of Zimbabwe

CONTROLLED DOCUMENT
BLSAC # 002